

#BPF24



BPF Annual Conference 2024

Building our Future



Tuesday 2 July 2024 | 12 noon | 1 Wimpole Street | London

Kindly sponsored by:

**AVISON
YOUNG**

th trowers & hamlins

Conference Overview

12 noon **Registration and lunch**

1pm **Chair's Welcome**

Melanie Leech CBE, BPF

1.05pm **BPF President's Welcome**

Mark Allan, Landsec

1.30pm **Keynote Address**

Ben Page, Ipsos

2.15pm **Panel 1: The Global Context – a View of the UK from Global Investors**

Jessica Hardman, DWS

Anne Gales, Threadmark

Vicky Stanley, AustralianSuper

Zeeshan Mughal, TD Asset Management

3.10pm **Break and Networking**

3.40pm **Panel 2: Building our Future Talent**

Chantal Clavier, Heidrick & Struggles

Abigail Heraty, Amro Partners

Craig Worman, Delancey

Ian Marcus OBE, BPF Past President

Kirsten Hald, Colliers

Lorraine Baldry OBE, BPF Past President

3.40pm **Panel 3: Building our Future - a PropTech Revolution**

Natasha Patel, Avison Young

Craig O'Donnell, Bothy Consulting

Luke Graham, Pi Labs

Kingma Ma, PT1

Conference Overview *Continued*

4.30pm **BPF Futures Competition Winner**

Jessica Arczynski, Trowers & Hamlin

Sarah Thorley, BPF Futures Competition Winner

5.10pm **Celebrating BPF Futures**

Gafar Fashola, Related Argent LLP and
BPF Futures Chair

5.40pm **Conference Closes**

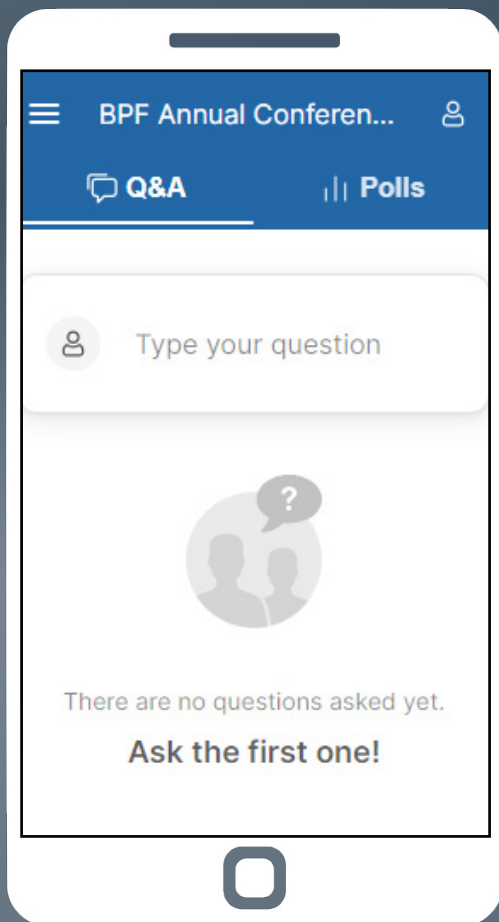
5.45pm **BPF Summer Reception**

8pm **Reception Closes**

Thank you to our sponsors



Join the conversation on **Slido**



Submit your questions to
our speakers and panels at
Slido.com using **#BPF24**
or simply scan the
QR code below:



Follow us on **Twitter** and **LinkedIn**



#BPF24

Conference Chair



Melanie Leech CBE

Chief Executive
British Property Federation

Melanie joined the British Property Federation as Chief Executive in January 2015 having previously spent nine years as Director General of the Food and Drink Federation.

Melanie began her working life as a Police Constable in the Metropolitan Police Service and subsequently held a number of senior roles in the civil service. Her role is to champion a diverse, successful and

sustainable UK real estate sector recognised for the positive economic and social benefits it delivers to communities across the country.

Melanie is a Trustee of the property industry charity LandAid and Chair-elect of the Council of the University of Essex. She was awarded a CBE in 2015 for services to the food and drink industry.

BPF President's Address



Mark Allan

Chief Executive, Landsec
President, British Property Federation

Mark Allan has been Chief Executive of Landsec since April 2020. Prior to that he spent a combined 14 years as CEO of FTSE 250 real estate businesses Unite Group (student accommodation) and St. Modwen (regeneration, logistics and housebuilding). As a result of these roles, he has a broad range of experience from across the property sector.

Landsec strives to connect communities, realise potential and deliver sustainable places. As one of the largest real estate companies in Europe, Landsec's £10 billion portfolio spans 23 million sq ft (as at 31

March 2024) of well-connected retail, leisure, workspace and residential hubs. Landsec's aim is to lead the real estate industry in critical long-term issues – from diversity and community employment, to carbon reduction and climate resilience, and to deliver value for shareholders, great experiences for customers and positive change for communities.

Mark is President of the British Property Federation and an Independent Trustee at the University of Bristol.

Keynote Address



Ben Page
CEO
Ipsos

Ben originally joined MORI in 1987 after graduating from Oxford University in 1986 and was one of the leaders of its first management buyout in 2000, and the team leading its sale to Ipsos in 2005. A frequent writer and speaker on trends, leadership and performance management, he has directed thousands of surveys examining consumer trends and citizen behaviour.

Ben led the government and social research practice from 2000 to 2009 when he became CEO Ipsos in the UK and Ireland. He was

appointed CEO of Ipsos as a whole (across 90 countries) in September 2021.

Ben is a Visiting Professor at King’s College London, and a fellow of the Academy of Social Sciences. He sits on the Economic and Social Research Council (ESRC) at UKRI. He serves on advisory groups at the King’s Fund, and the Social Market Foundation (SMF).

British Property Federation

Annual Dinner 2024

Kindly supported by:

MILLS & REEVE
Achieve more. Together.

Tuesday 13 November
Guildhall, London | Booking now open

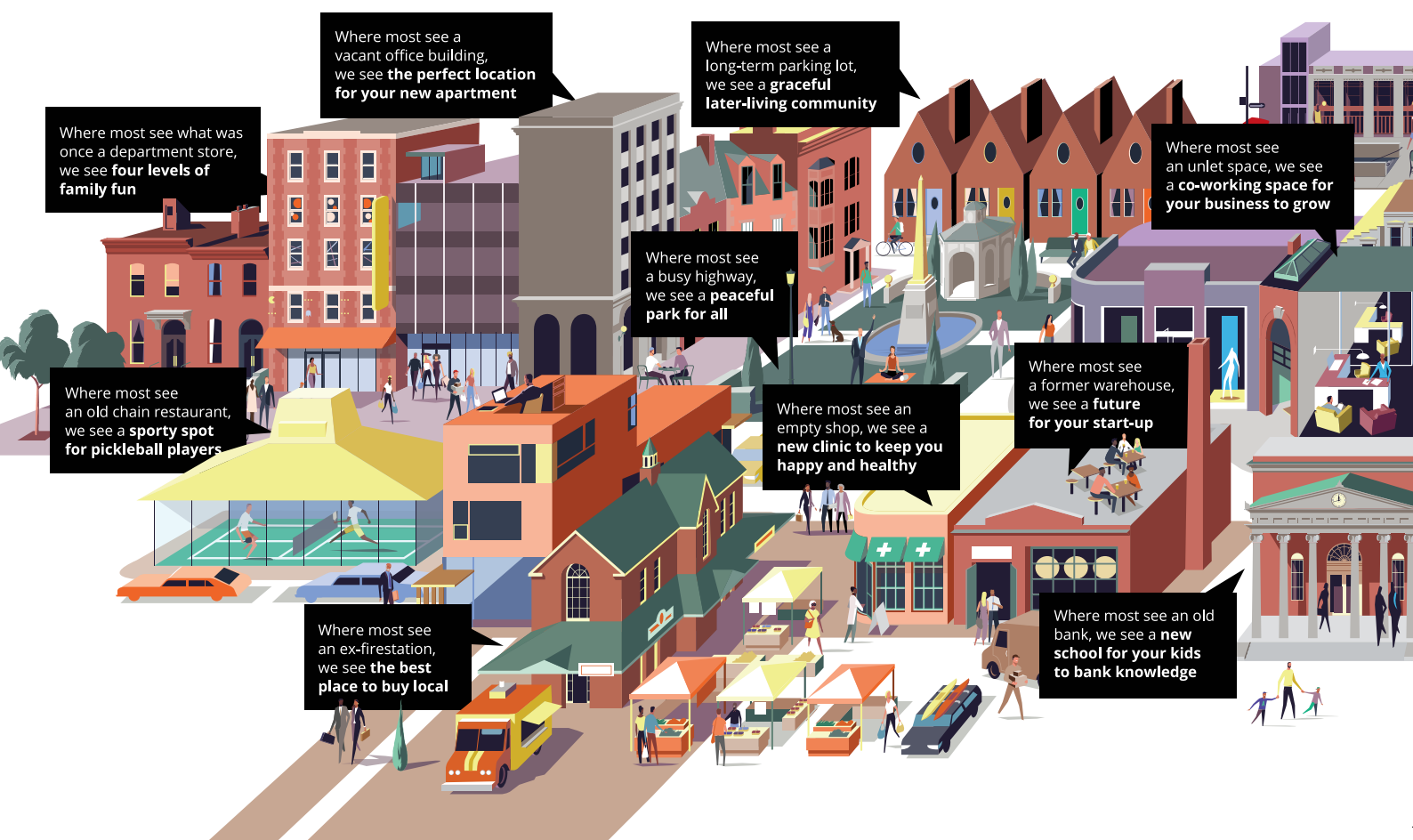


Where most see challenges we see opportunities

We're powered by people who aren't intimidated by the complex or unusual. People who not only see, but go after opportunities to create economic, social and investment value at every turn.

So whether it's finding new uses for old spaces, or regenerating entire districts, you can count on our experience, our expertise and our local insight to help you make the most of every opportunity.

avisonyoung.co.uk



Panel 1: The Global Context – a View of the UK from Global Investors



Jessica Hardman

CEO, DWS UK and Head of European Real Estate Portfolio Management; BPF Vice President

Jessica Hardman performs two primary responsibilities at DWS; CEO for DWS UK, with over 400 staff across passive, active and alternative investing, the UK business is a centre of excellence for DWS's key investment capabilities.

Jessica also undertakes the role of Head of European Portfolio Management at DWS, based in London, focusing on an international client base overseeing European and global real estate portfolios from core to value-add strategies. The suite of products includes European diversified and sector specific strategies via co-mingled funds and separately managed accounts. Previously, she was the Head of UK Real Estate Transactions and

has overseen over €10.5 bn of transactions during her career at DWS. She managed the investment team covering all real estate sectors, as well as building major separate account relationships with an Asian client base.

Jessica is CEO of DWS Investment UK Limited, board member for DWS Alternatives (Global) Ltd, a member of DWS Global leadership team and Global Investment leadership team, and a voting member of the European Investment Real Estate Committee. She joined DWS in 2004. Jessica will also become President of the BPF in 2024.



Zeeshan Mughal

Vice President, Global Real Estate
TD Asset Management

Based in London, Zeeshan leads European Investments for TD Asset Management's Global Real Estate strategy, where his responsibilities include the facilitation of investments in direct and indirect real estate strategies across Europe.

He holds a B. Comm. with Honours from DeGroote School of Business at McMaster University, a MBA from the Schulich School of Business at

York University and is a CFA charter-holder. He also served on the Board of Directors for Home Ownership Alternatives, a non-profit mandated to provide affordable housing solutions to Canadians and is currently a member of the INREV due diligence committee.

Panel 1: The Global Context – a View of the UK from Global Investors *continued*



Vicky Stanley

Investment Director
AustralianSuper

Vicky joined AustralianSuper’s property team in May 2021 and works in the London office. Her focus is on identifying opportunities to grow the Fund’s c £8bn property portfolio.

Over nearly two decades Vicky has developed considerable expertise in commercial and residential real estate, most recently at Invesco, where she ran its £750 million UK Residential Fund strategy, and prior to this grew £32m of Alternatives seed capital into a leading UK residential investment platform with c.£350m AUM in three years.

At AustralianSuper, her cross-sector and investment management expertise focuses on developing the Fund’s real estate investment platforms and she is a Board Director on several of our European investments.

Vicky works alongside AustralianSuper’s Head of European Real Assets, Paul Clark, evaluating new investment opportunities benefiting from structural changes in the economy.



Anne Gales

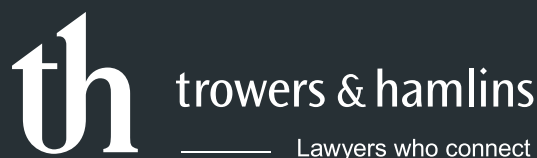
Founding Partner
Threadmark

Anne is a Partner and co-founder of Threadmark. She has 30 years’ experience of capital raising and financial markets, and has advised and raised capital for over 70 different fund managers in real estate, credit, infrastructure and private equity since 2002.

Previously she worked with Robertson Stephens where she focused on equity private placements, and at Salomon Smith Barney (now Citigroup) focusing on debt private placements. Anne started

her career at Morgan Stanley where she worked in fixed income derivatives and corporate finance.

Anne has a Masters in Economics from Erasmus University Rotterdam.



— trowers.com

Rethinking Regeneration

Achieving more than the sum of its parts

Successful regeneration projects are facing mounting pressures. Local planning challenges combined with funding issues and a need for more consistency at a national political level are adding risk and hindering innovation.

Trowers & Hamlin has diagnosed the key challenges and opportunities for regeneration, which are felt across the public and private sectors, and puts forward these nine recommendations to the industry, local and national government.

These can be found in our Rethinking Regeneration report:

www.trowers.com/rethinkingregen

Suzanne Benson
Head of Real Estate
sbenson@trowers.com
0161 838 2034

Follow us on



**Proud to support
BPF Annual
Conference 2024**

Panel 2: Building our Future Talent



Chantal Clavier

Partner
Heidrick & Struggles

Chantal Clavier is a partner in Heidrick & Struggles’ London office and leads the Real Assets Practice. She is a member of the CEO & Board of Directors Practice, enhancing boards for listed and private property companies and real estate private equity operating platforms, and a member of the global Diversity, Equity & Inclusion team.

Chantal’s breadth of experience and unique track record across both real estate investment/finance and the built environment and real assets enables her to provide a more holistic approach to search. Through her experience of working with asset backed operational businesses, Chantal has placed C-Suite leaders in Real Estate from hospitality, consumer, and retail. Her creative and innovative solutions help to drive change through talent in the sector.

Before joining Heidrick & Struggles, Chantal played a significant role in re-establishing and growing the real estate practice in Europe for another leading firm, working for a multitude of clients who invested, developed, and asset-managed property globally, regionally, and locally.

Chantal is a member of the Urban Land Institute and is on the leadership committee for The Prince’s Trust. She is an active speaker and ambassador for the industry and an advisor to real estate business leaders. In July 2021 she was voted in the Top 10 Women of Influence in Global Real Estate by PERE.



Craig Worman

Head of Public Affairs and Engagement
Delancey

Craig is the Head of Public Affairs and Engagement at Delancey, a leading real estate investment, development, and asset manager. He leads stakeholder relations across strategies and investments.

He previously spent over five years as a communications consultant at Portland, advising clients such as Landsec, U+I, and Grainger.

Throughout his career, Craig has advised real estate businesses on high-profile, complex, or

contentious communications issues – working to unlock and protect commercial value, improve perceptions, or manage scrutiny.

Craig sits as a member of the BPF Futures Advisory Board, supporting over 2,500 young professional members to grow and develop their careers in real estate.

Panel 2: Building our Future

Talent *continued*



Lorraine Baldry OBE

Past President
British Property Federation

Lorraine has over 50 years’ experience in a wide range of industries including technology, broadcasting, distribution, health care, utilities, real estate, nuclear, air purification and financial services.

Lorraine is Chairman of Ccm Technologies, Inventa Partners and Hydroxyl Technologies and a non-executive Director of Angel Trains Group.

She was Chairman of Schroder Real Estate Investment Trust, Sellafield Ltd, Radioactive Waste Management Advisory Council, London & Continental Railways, an Independent Director of Thames Water Utilities and a Governor at the University of the Arts London, where she chaired their Finance Committee.

Lorraine was Chief Executive of Chesterton International plc and prior to that held various

senior positions at Prudential Corporation, Morgan Stanley and Regus. She is a former Chair of London Thames Gateway Development Corporation and Central London Partnership and former non-executive director of St Ives plc and former senior independent director of DTZ Holdings plc and Circle Holdings plc. Lorraine was also a Board Member and Chair of Planning at the Olympic Delivery Authority.

Lorraine is an Honorary Member of the Royal Institution of Chartered Surveyors and a Past President of the British Property Federation. She is a Liveryman of the Chartered Surveyors’ Company and a Freeman of the Company of Information Technologists. She was awarded OBE in the Queen’s Jubilee Honours.



Abigail Heraty

Development Manager
Amro Partners

Abi is a Development Manager at Amro Partners, which is an investor, developer, and operator of PBSA, BTR and Co-Living real estate in the UK and Europe.

Abi is responsible for project managing the planning and development activities for Amro’s UK developments.

Abi also sits on the BPF Futures Advisory Board representing the pillar for learning.

Panel 2: Building our Future

Talent *continued*



Ian Marcus OBE

Senior Adviser
Eastdil Secured

Ian graduated from the University of Cambridge in 1981 with a degree in Land Economy. Ian was in the banking industry for over 32 years having previously worked for Bank of America, UBS, NatWest and Bankers Trust/Deutsche, always focusing on the real estate industry. Ian joined Credit Suisse First Boston in 1999 to establish the Real Estate Group, and became Managing Director and Chairman of the European Real Estate Investment Banking.

Ian is a member of Redevco’s advisory board, Chair of Europe’s largest self storage business, Shurgard, and the Senior Non-Executive Director for Town Centre Securities Plc. He is a senior adviser to both Eastdil Secured and Anschutz Entertainment Group. He is the Immediate Past President of the Cambridge University Land Society and a senior

advisor to two new Businesses, Work Life and Elysian Residences. He is a trustee of the Saracens Multi Academy Trust and a Non-executive Director of BCP Future Places. He chaired the Prince’s Regeneration Trust for 11 years and was a Trustee of the Princes Foundation.

Ian is a former Crown Estate Commissioner, former Senior Independent Director of Secure Income REIT, a past President of the British Property Federation, past Chairman of the Investment Property Forum, a Fellow of the RICS and for 10 years chaired the Bank of England Commercial Property Forum.

Ian was made an OBE in The Queen’s 2020 Birthday Honours List.



Kirsten Hald

Surveyor
Colliers

Kirsten is a highly skilled Senior Surveyor at Colliers in Birmingham, with extensive experience in the real estate industry. Starting as a Property Assistant at Bruton Knowles in Birmingham in 2019, Kirsten quickly progressed to join Colliers in February 2021 as a valuable member of the Investment Property Management team. Kirsten holds a BA Joint Honours degree in German and Politics from the University of Nottingham and furthered her education by completing a master’s conversion course in real estate at the University College

of Estate Management, earning a distinction in April 2022, all while balancing her full-time job at Colliers.

In May 2022, Kirsten achieved a notable milestone by passing her APC to become a Member of the Royal Institution of Chartered Surveyors (RICS), demonstrating her commitment to professional development and expertise.

Kirsten is a member of the BPF Futures Advisory Board.

Panel 3: Building our Future - a PropTech Revolution



Natasha Patel

UK Head of Innovaion & Insight
Avison Young

Natasha joined Avison Young in September 2020 as UK Head of Market Intelligence and has been responsible for the growth and delivery of Avison Young’s data and analytics platform, Avant, in the UK and into Europe. Natasha has been enthusiastically integrating the platform into the UK business and developing the data and data partnerships in the UK to support market transparency and analytics as well as data led insights. She has also been actively working with Avison Young clients to understand their key challenges not only around reporting and data management but also to support portfolio analysis and strategy, working with them to provide Avant led solutions.

Natasha has more than 16 years’ CRE experience providing insight and analysis globally and has worked with major occupier and investor clients. Natasha’s background includes analysing global trends within the retail market as well as analysis

on retailer activity, consumer behaviour and shopping centre performance. Throughout her career Natasha has worked with clients such as Nike, Adidas, Hugo Boss, CBRE Global Investors and Redevco to name a few.

Natasha’s experience on consumer and occupier related thought leadership, together with her analytical background and interest in technology and AI in particular puts her in a unique position to be able to advise clients from a variety of backgrounds.

Natasha has significant experience with public speaking and is regularly asked to attend panels and events to comment on topical issues within the CRE industry.

Natasha also has previous experience in business development and strategic growth at a corporate level.



Kingma Ma

Managing Director UK
PT1

Kingma is the UK Managing Director of PT1 VC, a venture capital firm investing in European early stage startups that impact the built environment. He has been investing in this space for the past 5 years, and prior to VC, cofounded his own startup and worked in product management roles at tech

startups. He lives in London and is also the Chair of the British Property Federation’s technology council. He has a special interest in efficient high quality data capture across the built environment and its supply chains.

Panel 3: Building our Future - a PropTech Revolution *continued*



Luke Graham
Head of Research
Pi Labs

Luke Graham is Head of Research at Pi Labs, Europe’s most active venture capital firm investing in technologies for the built world. He has authored research on a range of strategic themes affecting the future of real estate, and has advised numerous governmental and non-governmental agencies, most recently the Department for Levelling Up, Housing and Communities.

Luke’s background also includes real estate entrepreneurship, having successfully exited his first start-up in his late-20s. He lectures at the University of Oxford’s Saïd Business School as an Associate Fellow, particularly on the themes of real estate investment, proptech, megatrends and innovation.



Craig O'Donnell
Founding Partner
Bothy Consulting

Craig O'Donnell is a founding partner of Bothy Consulting, an innovation and transformation consultancy that focuses on helping businesses accelerate innovation and drive AI and digital adoption.

Craig was previously the Group Innovation Director at Grosvenor and was responsible for digital innovation activities across the Group, having helped set up Grosvenor’s innovation capability in 2019.

Craig was also Chief Information Officer at Landsec where he was responsible for technology strategy and delivery across the Group as well as leading several business transformation projects.

Craig is a Board member and committee chair at Thrive Homes and holds a BA (Honours) in Geography from the University of Strathclyde.

BPF Futures Competition Winner



Jessica Arczynski

Partner
Trowers & Hamlins

Jessica specialises in all aspects of public sector housing, advising on key legal issues in relation to vires and structuring, public sector development and funding arrangements.

She has advised on a wide range of residential delivery structures including in relation to corporate and contractual joint ventures, group companies, consortiums, partnerships and direct delivery arrangements. In this role she has provided in-depth advice on all aspects of structuring, regulation and governance including in relation to vires (powers), statutory consents, state aid / subsidy control, procurement and ESG compliance.

Jessica also has in-depth experience of funding structures, having advised Homes England, Greater

London Authority, numerous local authority and combined authorities and recipients of funding on their grant and debt funding for residential projects, including the Affordable Homes Programmes, the Social Housing Decarbonisation Fund, infrastructure funding, debt and equity arrangements and a wide range of bespoke grant funding agreements between public authorities and third parties (e.g. community-led housing, Right to Buy receipts, MMC).

Jessica represents real estate at the firm's Responsible Business taskforce with a particular focus on the delivery of the social and governance elements of ESG in the sector. Jessica is also the Deputy Head of Equity Diversity & Inclusion at Trowers.



Sarah Thorley

BPF Futures Competition Winner

Sarah is a specialist in strategic advisory at Savills, providing expert advice throughout the conception and evolution of real estate strategies. She focuses on advising clients on multi-jurisdictional projects through bespoke, data-driven analysis.

A passionate advocate for DEI, Sarah participated in the Pathways to Property summer school prior to university and now sits on its project board.

Additionally, she is President-Elect of CREW UK, part of CREW Network, a global organisation dedicated to advancing women in commercial real estate.

Celebrating BPF Futures



Gafar Fashola

Assistant Development Manager, Related Argent LLP
Chair, BPF Futures Advisory Board

Gafar currently works as an assistant development manager at Argent LLP, working on the KGX1 development. Gafar is the Chair of the BPF Futures Advisory Board and also the board member for influencing.

Gafar started his career journey at British Land as an apprentice in November 2019 as part of

the Canada Water team and works as part of the development team delivering the Canada Water Masterplan. Gafar also founded the Next Gen network at British Land.

How your organisation can support BPF Futures



1. Encourage all your eligible colleagues to join BPF Futures - it's totally free.
2. If you are a manager or senior leader, you can support BPF Futures members by helping them find the time to take part in BPF Futures events.
3. Sign up as a mentor for the BPF Futures mentoring scheme.
4. Help us with our events:
 - by getting involved as a speaker;
 - offering site tours;
 - providing venues or sponsorship for our networking events.

For more information or to get involved, contact our BPF Futures Programme Manager Emily Newitt - futures@bpf.org.uk

Delegates

**AVISON
YOUNG**
th trowers & hamlins

Katherine Golding, Addleshaw Goddard LLP

Matt Smith, Allsop LLP

Abigail Heraty, Amro Partners

Ami Kotecha, Amro Partners

Melville Rodrigues, Apex Fund and Corporate Services (UK) Limited

Georgios Azarias, ARA Venn

Hamzah Ahmed, ARA Venn

Matthew Boyle, ARA Venn

Paul Richards, AREF

Dan Fielding, Ashurst LLP

Lauren Cole, Ashurst LLP

Paul Clark, AustralianSuper

Victoria Stanley, AustralianSuper

Carol Shields, Avison Young

Hannah Fiszpan, Avison Young

Jianxi Cheng, Avison Young

Lara Boyd, Avison Young

Mischa Kursar, Avison Young

Natasha Patel, Avison Young

Sarah Browne, Avison Young

Josh Dover, BDO LLP

Neil Insull, Blick Rothenberg

Ola Adigun, Blick Rothenberg

Craig O'Donnell, Bothy Consulting

Simon Carter, British Land Company plc

Adam Cohen, British Property Federation

Dominic Curran, British Property Federation

Emily Newitt, British Property Federation

Hadar Cohen, British Property Federation

Ian Fletcher, British Property Federation

Ion Fletcher, British Property Federation

Kate Butler, British Property Federation

Kelly Butcher, British Property Federation

Kirsty Wade-Potter, British Property Federation

Lorraine Baldry OBE, British Property Federation

Melanie Leech CBE, British Property Federation

Michelle Killington, British Property Federation

Murray Horn, British Property Federation

Nathan Dodson, British Property Federation

Rachel Kelly, British Property Federation

Rob Wall, British Property Federation

Sam Bensted, British Property Federation

Sarah Spencer, British Property Federation

Szilvia Ballai, British Property Federation

Terry Langford, British Property Federation

Theo Plowman, British Property Federation

Claire Milton, Bryan Cave Leighton Paisner LLP

Lawrence Hutchings, Capital & Regional Plc

Scott Harkness, Carter Jonas LLP

Jason Hardman, CBRE Limited

Connor Holbert, CIM

Ian Painter, Clifford Chance LLP

Fredrik Widlund, CLS Holdings PLC

Clare Thomas, CMS Cameron McKenna Nabarro Olswang LLP

Chris Antoine, Co Star UK Ltd

Greg Dawes, Co Star UK Ltd

Mark Stansfield, Co Star UK Ltd

Kirsten Hald, Colliers LLP

Delegates

Patrick Scanlon, CoStar News

Caroline Fleet, Crowe UK LLP

Craig Worman, Delancey Real Estate Asset Management Ltd

Chryselle Stewart, Dentons UK and Middle East LLP

Anna Costa, Department for Business & Trade

Diane Lin, Department for Business & Trade

Emily Hemmings, Department for Business & Trade

Cathy Franklin, Department for Business & Trade

Loretta Chan, Department of Business & Trade

Jane Owen, Department for Levelling Up, Housing and Communities

Katherine Hartup, Department for Levelling Up, Housing and Communities

Mike Dalton, Department for Levelling Up, Housing and Communities

Carol Choy, DWS Alternatives Global Ltd

Daran Sahota, DWS Alternatives Global Ltd

Jessica Hardman, DWS Alternatives Global Ltd

John Bae, DWS Alternatives Global Ltd

Ian Marcus, Eastdil Secured

Daniel Clements, Emapsite

Andrew Thornton, Enterprise Land

Sharon Brown, Federated Hermes

Amy Lacey, Fenchurch Law

Joanna Grant, Fenchurch Law

Giles Barrie, FTI Consulting LLP

Nancy Grover, FTI Consulting LLP

Martin Bellinger, Goodstone Living Ltd

Helen Gordon, Grainger Plc

Kurt Mueller, Grainger Plc

Robert Hudson, Grainger Plc

Mark Mwaungulu, Green Street News

Natasha Voase, Green Street News

Mark Payne, Haynes and Boone LLP

Chantal Clavier, Heidrick and Struggles

Peter Denton, Homes England

Katie Bradshaw, Infabode

Moz Gamble, Intelligent Real Estate Due Diligence Limited

Robert McNally, Intelligent Real Estate Due Diligence Limited

Ben Page, Ipsos Mori

Alex Moon, iQ Student Accommodation

Dushyant Sangar, iQ Student Accommodation

Kashia Kuzniarz, JTP

Chiara Del Frate, K&L Gates LLP

Christian Major, K&L Gates LLP

Andy Pyle, KPMG LLP

Chris Hogwood, Landsec

Mark Allan, Landsec

Ben Campbell-Smith, Landways

Meri Braziel, Landways

Richard Bussmann, LCN Capital Partners

Guy Windsor-Lewis, Locale

Rishi Banerjee, Locale

Justin Warents, Lockton Companies LLP

Oliver Pearman, Lockton Companies LLP

Isabella Dierden-Hunt, Macfarlanes

Michelle Hunt, Mills & Reeve LLP

Susan Freeman, Mishcon De Reya LLP

Delegates

Sheena Saraf, Mortar IO

Sarah Payling, Ocean Media

Greg Phillips, Penningtons Manches Cooper LLP

Luke Graham, Pi Labs

Phil Holland, Prime Plc

Kingma Ma, PT1

Tzvete Doncheva, PT1

Olly Freedman, Proptivity

Harry Lewis, QuadReal

Sue Brown, Real Estate Balance

Richard Angliss, RCA Real Estate Consulting LTD

Kitty Harris, Regent Capital Plc (New Resource Partners)

David Partridge, Related Argent

Gafar Fashola, Related Argent

Shaun Kirby, Resolution Property

Faraz Baber, RPS Consulting Services Ltd

Lee Knight, RSM UK

Mark Ridley, Savills Plc

Richard Rees, Savills Plc

Sarah Thorley, Savills Plc

James Sparrow, Savills Plc

Lillian McDowall, SCAPE Scotland

Anamika Dwivedi, Scottish Property Federation

David Melhuish, Scottish Property Federation

Josie Sclater, Scottish Property Federation

Andrew Pilsworth, SEGRO plc

Neil Impiazzi, SEGRO plc

Darren Cleveland, Shoosmiths LLP

Jason Jackson, Shoosmiths LLP

Julian Milne, Stow Securities plc

Zeeshan Mughal, TD Asset Management

Malcolm Young, The Wilky Group

Anne Gales, Threadmark

Rachel Channer, TLT Solicitors

Amy Goodall, Trowers & Hamlins LLP

Ayda Habbosuh, Trowers & Hamlins LLP

Eddie Henley, Trowers & Hamlins LLP

Ivy Acorda, Trowers & Hamlins LLP

Jasmine Ratta, Trowers & Hamlins LLP

Jessica Arczynski, Trowers & Hamlins LLP

Nicholas Barrows, Trowers & Hamlins LLP

Rachel Kerr, Trowers & Hamlins LLP

Sam Folley, Trowers & Hamlins LLP

Sara Bailey, Trowers & Hamlins LLP

Simon Valner, Trowers & Hamlins LLP

Emily Shaw, UK PropTech Association

Sammy Pahal, UK PropTech Association

Shweta Menon, UK PropTech Association

Isabelle Hease, Visitor Insights

Rajeev Singhal, White label Creative

Georgie Drewery, Yardi Systems Ltd

Justin Harley, Yardi Systems Ltd

Michael Cook, Yardi Systems Ltd

Paul Rowe, Yardi Systems Ltd

We greatly value your feedback and would love to hear your thoughts on today's event. You can share your experiences and suggestions by completing this [short survey](#).